



# ETA SURVEY

Eta Chapter of Kappa Delta Rho Fraternity | The University of Illinois | www.kdrillinois.org | Spring 2017

## A Letter from the Alumni President



### Brothers:

The 2016 annual fund grew to an impressive \$18,000! To put that in perspective, in 2015, we raised \$8,500. I want to thank all of you who supported the annual fund last year for making this happen. As I have mentioned in prior newsletters, the annual fund helps finance the communication program, our website, and homecoming. In addition, it goes toward scholarships and larger property improvement projects, like we saw last year with the lawn. The 2017 annual fund is off to a great start, having raised about \$11,000 to date. Thank you, to all of those who have supported it or plan to this year; let's keep it growing!

We are entering the time of year when the board makes decisions on house projects to complete over the summer. With the lawn project behind us, we are now looking at an assortment of smaller projects of a more cosmetic nature, like interior painting for instance. It is hard to believe that we are nearly seven years out from the renovation already; it is important to keep on top of these things so that the property remains competitive and continues to be a desirable place to live.

The next major item on the horizon for the board is refinancing our mortgage, which matures in about a year and a half. We will be evaluating options concerning how much of the balloon to pay down and how much to ultimately borrow for another five years. The board will need to balance the amount of cash it wants on hand to be comfortable against how much debt it wants to assume.

The board always welcomes involvement in any capacity. If you are interested in getting involved, please feel free to reach out to me. I hope everyone has a safe and enjoyable summer with family and friends, and I hope to see you at homecoming in the fall!

Fraternally,

*Michael Kolberg*  
Mike Kolberg '03  
President, Eta Building Association

## Alumni Spotlight: Donald C. Russell '70

*Editor's Note: For this edition of the newsletter, we're shining the Spotlight on past Eta Board President, Don Russell '70. Originally from Oak Lawn, Illinois, he graduated from UI with a Bachelor of Architecture in 1970 and a Master of Science in architectural engineering in 1971. Don is a retired architect and structural engineer and is actively consulting in space strategy with BP. He retired from Larson Engineering in December 2015. Don and his wife, Liz, have been married for 43 years, and they have three children: Julia Bucheger, who is the national service director for Medtronic, David Russell, an elementary school principal in West Aurora (his godparents are Cindy and Joe Maloney '69), and Richard Russell, who works in sales in Napa, California. Don and Liz enjoy spending time with their four grandchildren and volunteering at St. Raphael Church. For fun, Don explores genealogy, and he gets outside for a little fly-fishing (and fly-tying) whenever he can.*



Don with his wife, Liz, while visiting Napa, California, last February, where their son Richard lives with his wife, Allie (and is employed by Opus One Vineyard).

### What led you to you join the fraternity back in school?

I didn't pledge until the second semester of my sophomore year. As a freshman, I arrived at Champaign in 1965 with about 20 high-school friends. After a year, I wanted to expand my own network. In fraternity life, I saw an opportunity to make more friends, life-long friends, as well as a place to call "home" when I would return for Homecomings. I got what I expected and more.

### I understand you had a fraternity nickname. How did you get it?

When I moved to the house, everyone called me Lenny. During the last week of our pledge process, when asked a question, the pledge class (there were four of us) were to answer together to show unity. I suggested that I say "one, two, three" before we answered. The actives took notice. Well, Len Barry was famous for the song "1-2-3," and so I was called Lenny after that. We even had to sing the song. I messed up the words once, and instead of "It's so easy, like taking candy from a baby," I sang "It's so easy, like having a baby." Lenny stuck.

### What was your major and how did you prepare for the professional world?

My major was architectural engineering. I have a Bachelor of Architecture (five-year degree) and Master of Science in architectural

engineering from U of I, and I later got an MBA. During college, alum George Wright '50, a structural engineer with American Bridge Division of US Steel, had lunch with the undergraduates. Through him, I got a job for two summers working for US Steel in their engineering department. That experience was good for my resume to get my first job.

### Where did you work after graduation?

When I graduated, I went to work for an architect, Harold Jacobs '51, in South Holland, known for designing schools, something that interested me. My first day on the job, I asked Harold where he lived at U of I, he said KΔP. That led to two great years of working on school projects. After two years, I went to work for CF Murphy, got married, passed my

Donald Russell (continued on page 4)



Don's family came in for his 70th. Pictured watching his kindergarten grandson Rayan's (6) basketball game. His son David took the photo (L-R): (top row) wife Liz; (middle) daughter Julia, grandchildren Mabel (6) and Max (4), daughter-in-law Allie, son Richard, and Don. (front) daughter-in-law Meg and granddaughter Genevieve (3).





# Chapter News



## From the Consul

### Brothers:

I hope the new year has been treating you well. It's certainly been treating us well here at the chapter. We had an excellent spring rush, recruiting 11 fine gentlemen to the fraternity. I'm very proud of our rush chairs and the bid committee, considering the quality of the class and that the average spring class size in IFC is nine. I can't wait to see what these new pledges will do for the fraternity in the future; their dedication is impressive already. They were initiated on March 31.

The chapter has also been participating in various Greek philanthropy events on campus, such as Alpha Gamma Delta's Icing Out Diabetes, where we played in a broomball tournament for charity. We're also planning on holding our spring philanthropy event for the Andrew McDonough B+ Foundation, the National Fraternity's official charity, after spring break.

Running for consul is something I'd thought about for a long time, and the support I've gotten from the active membership and our alumni has been second to none. I'm really excited to see where this year will take me, and more importantly, where it will take the chapter. I hope to have more good news to write for all of you in the next *Eta Survey*. Things are looking up.

Honor Super Omnia,

*Bobby*  
Bobby McAuliff '19



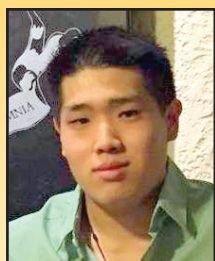
KDP's broomball team for AFD's Icing Out Diabetes.

Introducing the spring class of 2017!



## Chapter Spotlight:

## Peter Wen '17



**Editor's Note:** Representing the chapter in the Spotlight is **Peter Wen '17**. From the hometown of Wheeling, Illinois, Peter is a senior and is on track to graduate with a degree in systems engineering and design. His concentration is in business systems integration and consulting, with a minor in business. Serving as chapter advisory-board chairman, Peter has been a strong leader for the Eta men. On campus, Peter is the Illini Get Fit founder and president, and he is also involved with the Institute for Operations Research and Management Sciences as the corporate director. His work experience includes incoming digital transformation and strategy intern at Maven Partners, LLC, product management intern at CME Group, and project management intern at MasterCard. In his free time, Peter enjoys weightlifting, cooking, and reading.

is so much going on during school and, from classes to organizations to career fairs, much of it can get overwhelming. I think what I appreciated most about the house is always having the opportunity to return to a house full of my closest friends, where I can take time for myself and enjoy my time at school.

### What inspired you to create the Illini Get Fit club?

Growing up, I was unhealthy and overweight, and it was the moment I found fitness that I began to start taking control of my life. Coming to college, I wanted to maintain something that has been so important to me, and I noticed that, in a school with 1000-plus organizations, there was no club that focused solely on building a community around fitness and supporting those who wanted to start or maintain a healthy lifestyle. I knew I couldn't be the only one who'd want this community, and I set off to start Illini Get Fit.

### What have you enjoyed most as a member of KDP?

Being a member of KDP has been a defining aspect of my college career since joining in my first semester, and although there are many great qualities of the house, my favorite has always been having a second home. There

### How did you secure an internship at Maven Wave Partners, LLC?

There were a few reasons I was lucky enough to get an opportunity with Maven Wave. My first internship was with one of Maven Wave's clients, and I was on the team that

directly managed their product. I was able to network early and had an in-depth understanding of one of their services. I demonstrated, through my experiences with project/product management, that I can leverage my technical skill set and my understanding of business to engage and deliver solutions to their clients.

### Any plans for after graduation?

My goal is to go into industry for the foreseeable future, possibly in consulting, sales, strategy, or business development, to gain some experience and to apply what I've learned so far. Afterward, I would like to go to graduate school and obtain a DBA or PhD in business strategy.



Peter volunteering with Mastercard.





## Eta Man Named in UI's Athletic Hall of Fame



Sports legend and fellow Eta brother, **Harold "Doc" Osborn '22**, has been named as a member of the inaugural class of the University of Illinois Athletics Hall of Fame for track and field (1920-1922)!

Harold Osborn is a member of the U.S. Track & Field and Cross Country Coaches Association Hall of Fame. He competed for the U.S. at the 1924 and 1928 Olympic games and was the 1924 high-jump and decathlon gold medalist (only time ever that an athlete won the decathlon gold and an individual event gold) and the 1928 high-jump silver medalist. Osborn set six world records during his career and helped the Illini win Big Ten team championships indoors and outdoors all three years at Illinois. Osborn won NCAA and AAU high-jump titles in 1922, while setting the high-jump world record with a leap of 6 feet 8¼ inches in 1924. Altogether, he won 17 national titles and held world indoor records in the standing hop, step, and jump, the 60-yard high hurdles, and the running high jump. His world record in standing high jump of 5 feet 5¾ inches still stands today.

The induction ceremony for the inaugural class is scheduled for Saturday, September 30, 2017, at State Farm Center on the UI campus. Illinois hosts Nebraska in football on September 29. We hope to see you there!

## Leave A Legacy

CONSIDER A LASTING GIFT that will support Kappa Delta Rho long after you are gone. By including Eta in your estate plans, you ensure the long-term health and success of our fraternity. Here's what you and/or your advisor might need to know; the most common ways to include Eta are through your will or life insurance. Sample language: I leave the sum of (\$xxxxxx.xx or xx% of my estate) to: Eta Building Association of Kappa Delta Rho, tax ID number 37-6048873, c/o the National Fraternity of Kappa Delta Rho, Greensburg, PA 15601, for their general purposes.

*PLEASE NOTE: This information is not presented as legal or tax advice. Always consult your advisors for questions you might have.*

**William G. Haag '69**, congrats and welcome home! Bill and his wife, Bobbi, safely returned from their tour of America's Great Loop! They set out on their boat, *Mist*, and successfully completed the 6,200-mile cruise, a 10-month journey, taking several interesting side trips on the way, such as a 550-mile cruise up the Tennessee River and a stop in St. Louis to visit family. Staying at 116 marinas, anchoring six times, navigating 101 locks, and making 40 fuel stops had to be coordinated. Visit their blog at [greatloopvoyageonthemist.com](http://greatloopvoyageonthemist.com) for complete details and to see more photos.

The poverty and mile upon mile of shanty towns intermixed with a modern city is truly humbling. It makes you realize how fortunate we are to be American."



A group of Eta brothers enjoying retirement traveled with their wives to Soana Island in the Dominican Republic: **Al Tunkel '68**, **Joe Maloney '69** and **Bob Nespechal '68**.

**Bill Paris '87** also recently completed an amazing trip. His went to South Africa. "The trip was structured as an adventure trip, with shark-cage diving, hikes up Table Mountain and Lions Head Mountain, kayaking to see the penguins, a wine tour, and a safari game-park tour. South Africa is a beautiful country.



Bill enjoys the company of a South African lion.

## UPDATE YOUR E-MAIL

We want you to be in the loop! Please confirm we have a good email for you. We periodically send updates, reminders, and good wishes at the holidays electronically.

To check your information, go to [www.kdrillinois.org](http://www.kdrillinois.org) and log in.

You can also use the tear-away section of the enclosed cover letter to review and update your information.

### HAVE ALUMNI NEWS?

We want to hear from you! Send your personal updates, accomplishments, adventures, and photos to our account manager Kasey Breedlove at [kbreedlove@elevateims.com](mailto:kbreedlove@elevateims.com), or simply fill out the tear-away form at the bottom of your cover letter and return it in the mail. We want to share it in the next issue of *The Eta Survey!*

## Chapter Eternal

*We are saddened to learn of the passing of our Eta brothers:*



**Allen R. Franck '67** passed away peacefully on January 9, 2017, surrounded by the love of his family. Allen earned his bachelor's and master's degrees in electrical engineering from the University of Illinois. He was employed at Fermilab for over 30 years, and was the owner of Aftech Engineering. He was a brilliant man who was able to fix anything. An avid runner, Allen completed the Chicago Marathon several times and qualified for the Boston Marathon. When he wasn't running, Allen enjoyed walking on trails and hiking through nature's beauty. Allen owned many motorcycles throughout his life and was always searching for the next fastest ride. Most of all, Allen loved his family and will be remembered as a loving husband to Karen and a doting father and an adoring grandpa.



**Douglas L. Garwood '66** passed away on Saturday, January 28, 2017. In 1966, Doug earned his BS in agricultural science and, in 1968, his MS in agronomy from the University of Illinois. He received his PhD in genetics from Penn State University in 1973. He married Alice Elizabeth "Betsy" Stout on August 25, 1973, in State College, Pennsylvania. He then served as an associate professor at Penn State, teaching plant breeding and conducting sweet-corn research. In 1980, Doug and Betsy returned to Stonington to join the family's corn and soybean seed business, Garwood Seed Company (owned by Syngenta), and he continued to remain active in agriculture throughout his lifetime. He was a member of Old Stonington Baptist Church and served as secretary and treasurer of the Old Stonington Cemetery Association for many years. Most of all, he was a kind, thoughtful, and loving son, husband, father, and grandfather.



## Donald C. Russell '70

(continued from page 1)

architectural license exam, and then the exam for my structural license. While at CF Murphy, I worked with Helmut Jahn and engineered the US Courts building on Eisenhower and First Avenue [in Chicago]. Then I worked for another engineering firm and moonlighted for my CF Murphy boss. Moonlighting, I designed the structure for the Sears Tower antenna and the structure for the Madison Square Garden score board. One daytime project was supervising the reconstruction of the Great American Eagle roller coaster in the late 1980s. The original chemical treatments of the wood had caused the anchors to the steel rails to deteriorate and replacement of the track was required. I was walking the track for a final inspection when the first roller coaster came rolling down the track. I held on to the center railing and sucked my butt in as the coaster when by!

### Why did you move from a consulting role into facilities management?

One of my clients at my third job (Teng & Associates, now EXP) was the Amoco Research Center in Naperville, Illinois. When I had projects there, it was a short trip from my Naperville home with no train ride. When they offered me a job to be their site architect, I took it. I lived in Naperville and had young children, so it was a great fit to live and work in the suburbs. I then hired Teng for projects. I was eventually outsourced to Larson Engineering in Naperville but continued to provide facilities management services to BP. I retired from Larson Engineering in 2015 but still do occasional consulting at BP.

### What type of role did you play at BP as the site transitioned from a research center to an office-oriented campus?

In 1990, I changed careers from consulting to facilities management with some design.

When I started at Amoco, it was primarily a research center. I worked with varied clients in updating laboratories and laboratory infrastructure, but the world changed. Research diminished, and a need for collaborative office space developed. I helped consolidate and restack laboratories and then converted abandoned laboratory space into office space. But that too changed, and we then converted walled office space into collaborative open-plan office space that supported the ever-changing office needs. I enjoyed working on this transformation.

### After the chapter recolonized, how did you become involved with the house project?

When the chapter recolonized, I didn't want to miss that and went down to Champaign for the ceremony. I was probably the third oldest one there — at one Homecoming, we commented that there weren't many alums, but the response was that there were quite a few but all much younger than us! Then the need to update the house developed. I worked on fundraising and then on revising the layout. Since I worked a lot with furniture in facilities management, I drew up the furniture plan, using freestanding armoire/closets and modular furniture, which allowed the chapter members flexibility of layout for rooms to meet their individual needs. I got it approved by the board, and so I developed the furniture order. I hope it's still working well.

### Why do you feel it's important to stay involved with your chapter brothers today?

I send Christmas letters to a number of fraternity brothers whom I don't regularly see. Six or seven of us from our era get together about twice a year. We meet downtown in Chicago for Restaurant Week or at a lake house. This fall, five couples are renting a villa in Tuscany for a week. That will be an adventure.

## Congratulations to our Fall 2016 Graduates

**BRIAN ELLIS**  
Elmhurst, IL  
Molecular and Cellular Biology

**CHRIS CZAROBSKI**  
Chicago, IL  
Psychology

**ARJUN THAKKAR**  
Palatine, IL  
Finance

**CHRIS CHARHUT**  
Lake Bluff, IL  
Aerospace Engineering

### Outside of work, what do you for fun?

When I was younger, I did more fly-fishing, mostly during visits to Michigan to my wife's brother. I tie my own flies, too. In the summer, I am always working in the garden. There is *not* a weed that I like. Lately, I am into genealogy, spending a lot of time on ancestry.com, learning about my Lithuanian and Swedish roots. Since our maternal grandmothers came from nearby Lithuanian villages, my wife doesn't want me to find out we are cousins.

### What advice can you give the alumni and young undergrads about staying in touch with their K&P brothers?

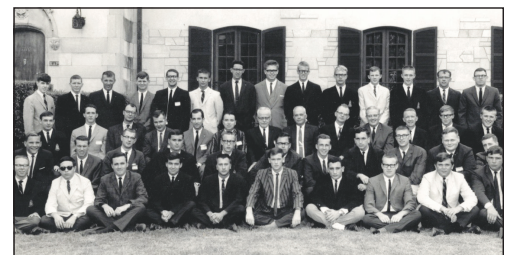
When I graduated in 1971, there wasn't email. It wasn't as easy to keep in contact. We joined K&P for the brotherhood, and it is important to keep in contact. I have some friends whom I don't see all year who send a Christmas card without note. I encourage them to share a little about what's going on, and I do periodically send information to our alumni relations office about what our group is doing. I hope others share their experiences so we can read them in the *Eta Survey*.

## What year is it?



Submit your guess and comments to our account manager, Kasey Breedlove ([kbreedlove@elevateims.com](mailto:kbreedlove@elevateims.com)).

We asked in our last issue, and we got one "best guess" response!



**Don Russell '70:** Hair is short. Ties are narrow. My guess is 1961.